

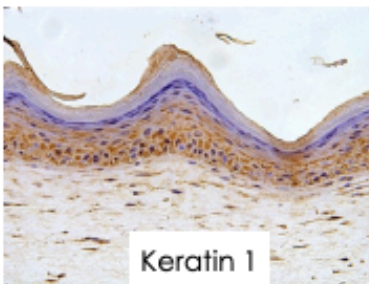
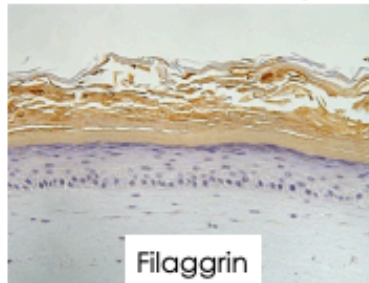
# Immunohistochemistry analysis of Labskin

## Summary:

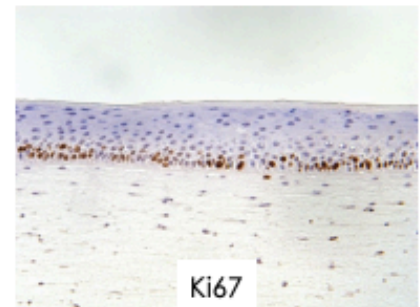
Labskin shows the same immunohistochemistry markers as human skin and is compatible with conventional paraffin wax embedding and cryo sectioning preparation techniques and a wide range of staining and immunohistochemistry protocols. (All examples were prepared by paraffin wax embedding).

### Labskin Structure Analysis

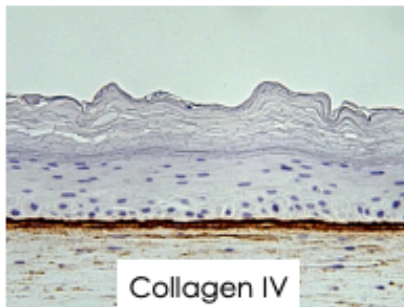
#### Barrier function analysis



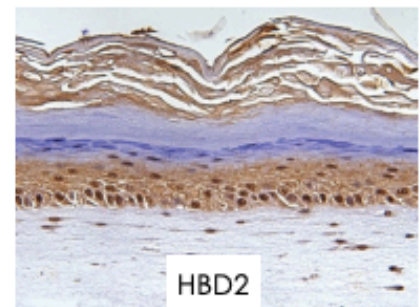
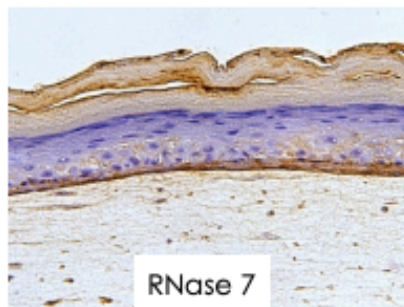
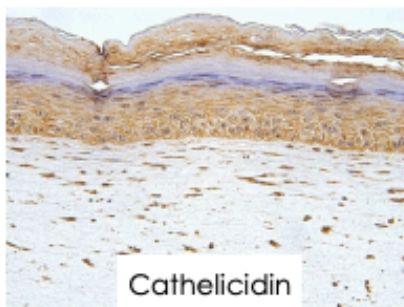
#### Cell proliferation analysis



#### Basement membrane analysis



### Labskin Microbial Response Analysis



Labskin can be used within the same experimental design to simultaneously evaluate several endpoints including cytokine responses (i.e. IL-1 $\alpha$ , IL-6, IL-8, PGE2, TNF  $\alpha$ , IL-10 etc.), histological changes, wound repair and photo-reactivity in addition to skin commensal and pathogenic microorganisms.



+44 (0) 7387 001 146 (Office Line)



[info@labskin.co.uk](mailto:info@labskin.co.uk)



[www.labskin.co.uk](http://www.labskin.co.uk)